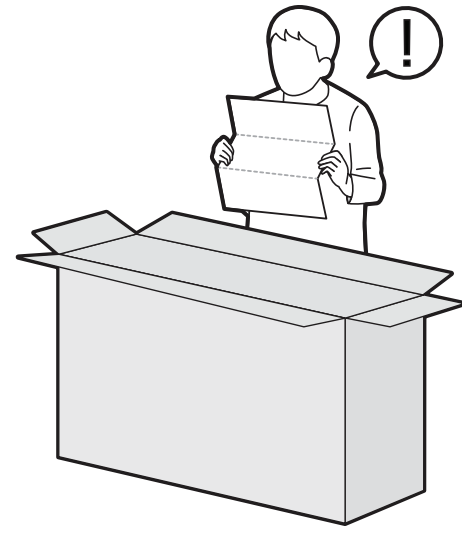
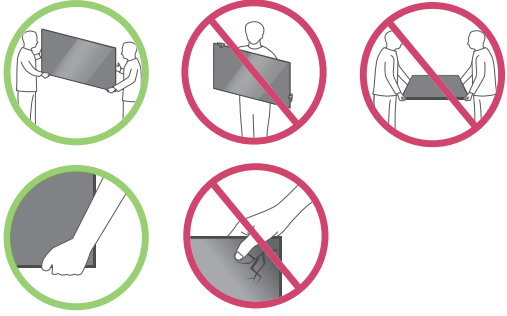
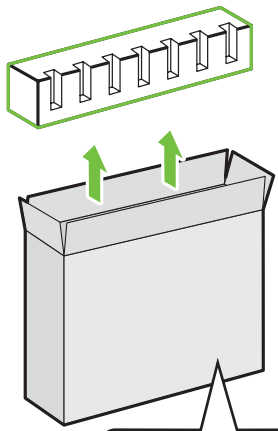


UN80*

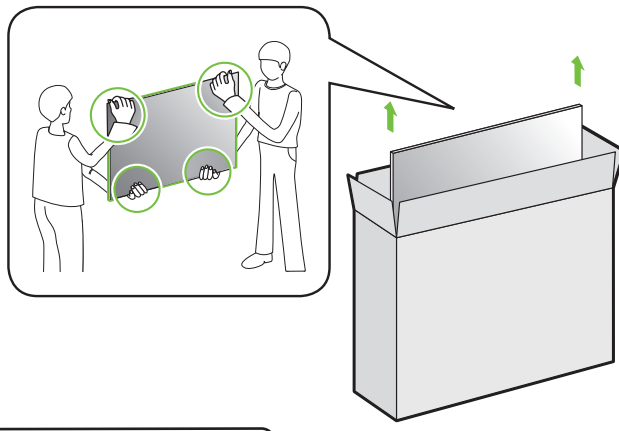


50/55UN80*

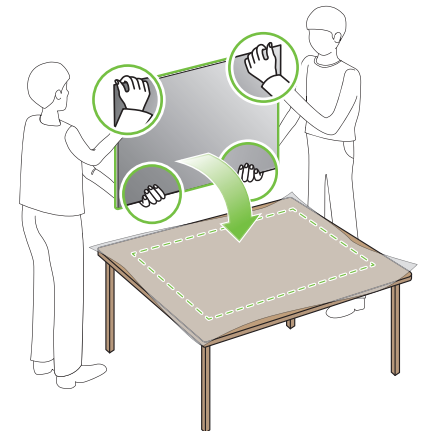
1



2

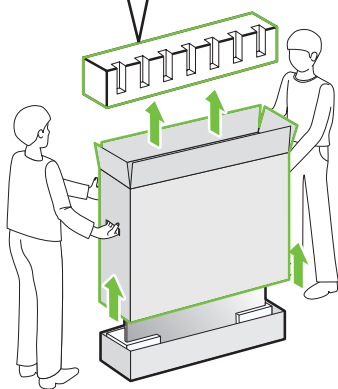


3

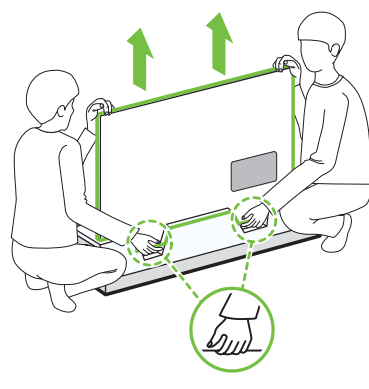


65UN80*

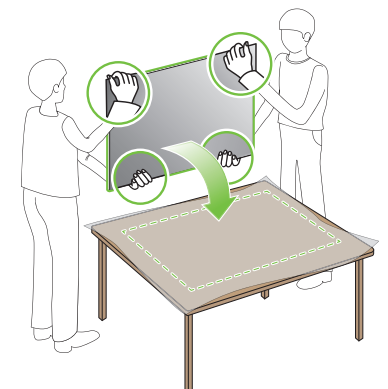
1



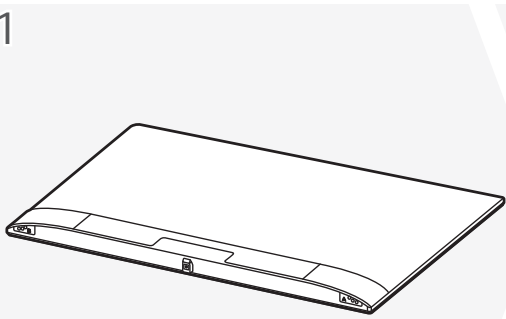
2



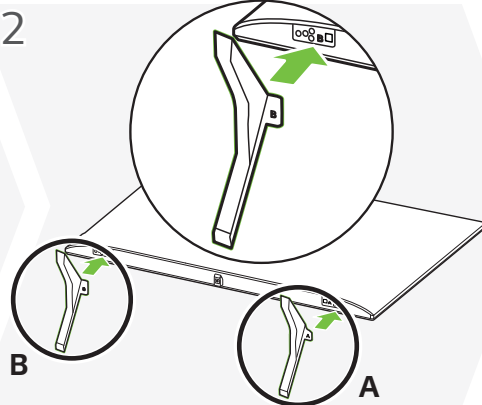
3



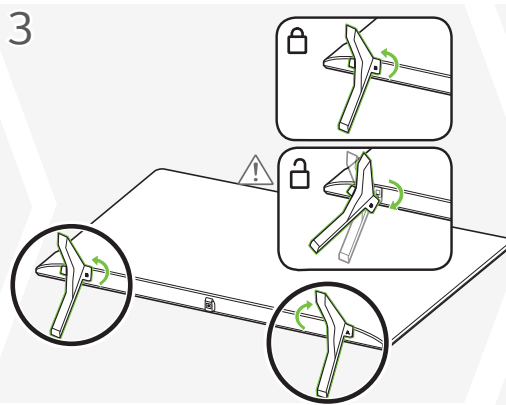
1



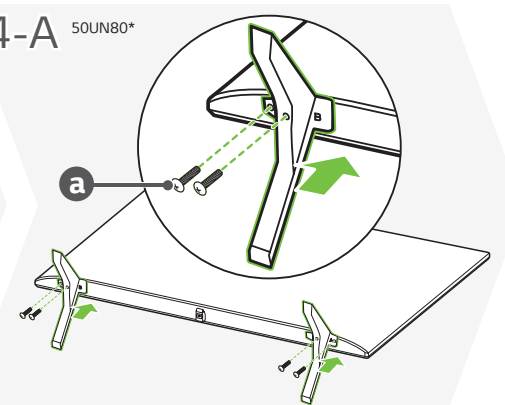
2



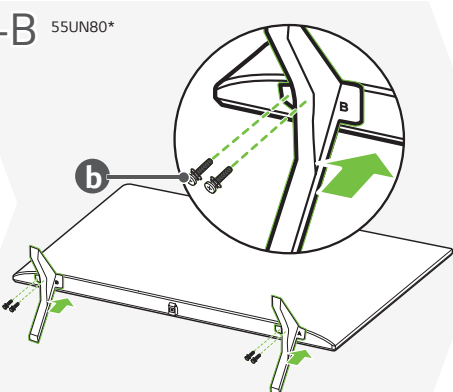
3



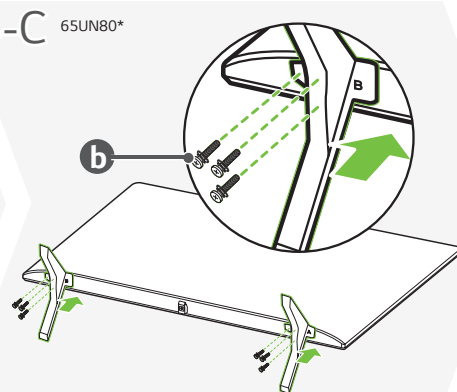
4-A 50UN80*



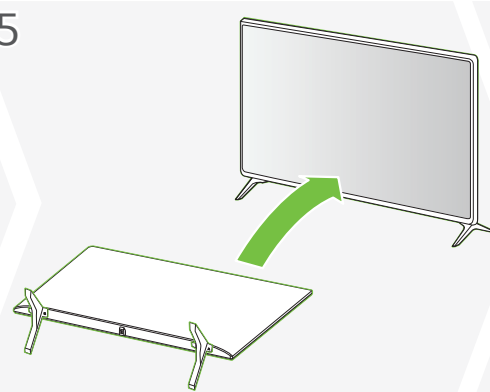
4-B 55UN80*



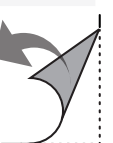
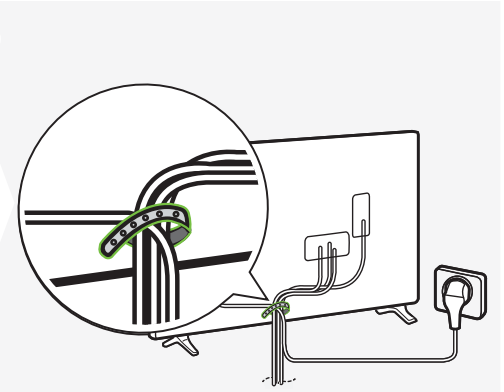
4-C 65UN80*

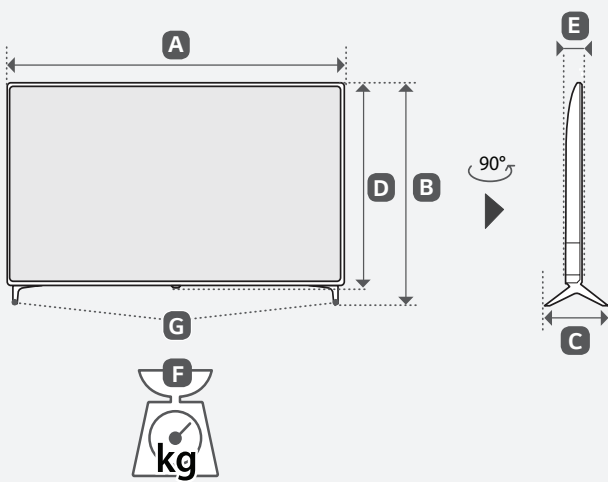
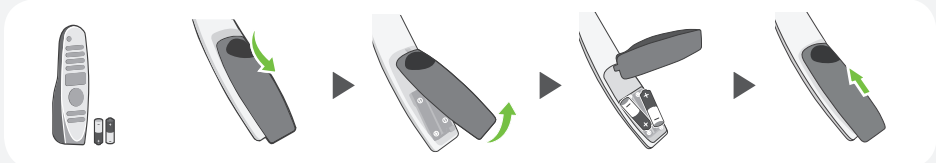
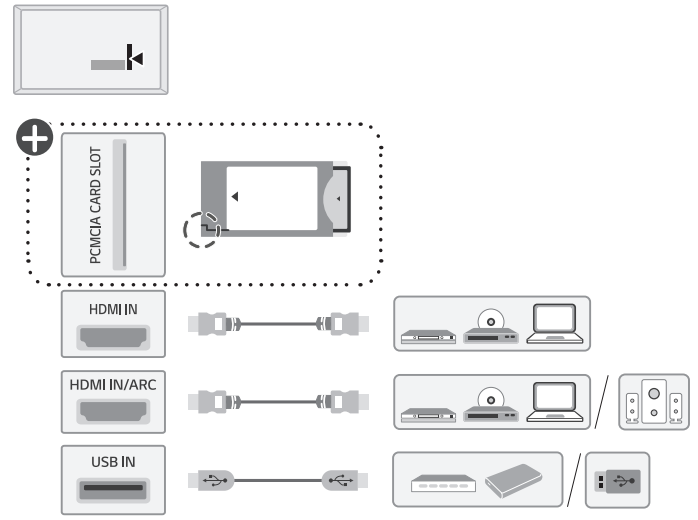
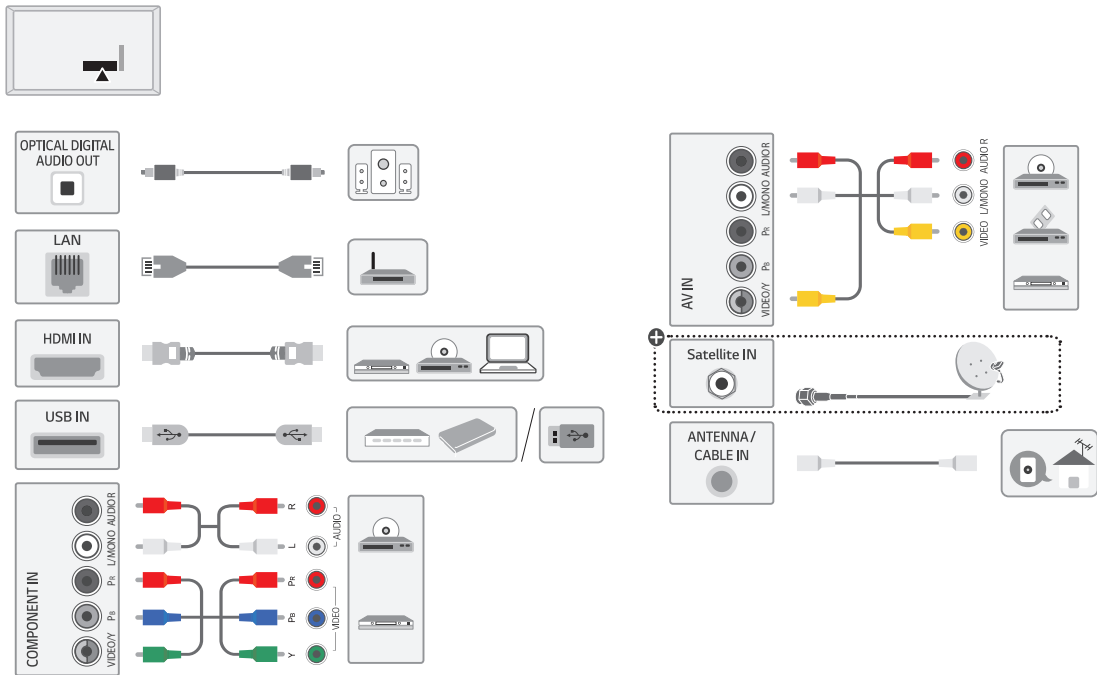


5



6





| | A | B | C | D | E | F | F-G |
|--|------|-----|-----|-----|------|---|------|
| | (mm) | | | | | (kg) | |
| 50UN8000PVB | 1128 | 713 | 232 | 658 | 86.4 | 12.3 | 12.1 |
| 55UN8000PTA 55UN8060PVB | 1234 | 773 | 232 | 717 | 84.0 | 16.2 | 16.0 |
| 65UN8000PTA 65UN8060PVB | 1453 | 901 | 271 | 840 | 84.0 | 23.3 | 23.0 |
| Power requirement / متطلبات الطاقة / Alimentation / Requisito de alimentação / شرایط برق / แรงดันและความถี่ไฟฟ้า / Nguồn điện yêu cầu | | | | | | AC 100-240 V ~ 50 / 60 Hz تيار متردد 240-100 فولت ~ 60 / 50 هرتز | |



English • Read **Safety and Reference**.

العربية • قراءة الأمان والمرجع.

Français • Lire le document **Sécurité et référence**.

Português • Consulte o manual **Segurança e referência**.

فارسی • موارد ایمنی و مرجع را مطالعه نمایید.

ภาษาไทย • โปรดอ่านคู่มือใช้ความปลอดภัยและการอ้างอิง

Tiếng Việt • Đọc phần **An toàn và Tham khảo**.

+ : Depending on model / حسب الطراز / Selon le modèle / Dependendo do modelo / به مدل بستگی دارد / ขึ้นอยู่กับรุ่น / Tùy theo mã sản phẩm